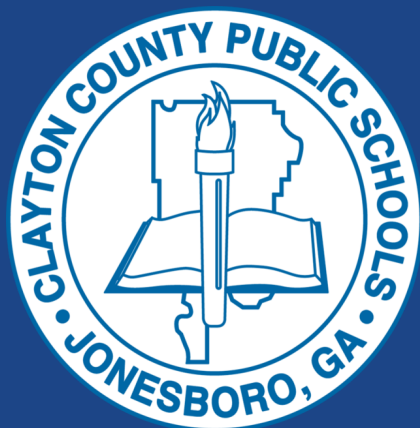


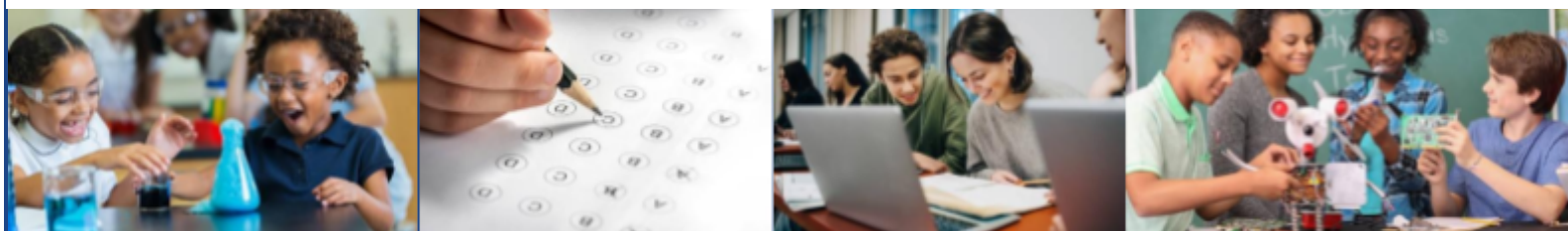
Assessment Calendar



2023-2024

Students and Families

Building a Better Tomorrow, Today



Parent/Guardian Frequently Asked Questions (FAQs)

Why is Testing Important?

To be successful and competent learners, students must acquire skills, concepts, and information. We use different tests and assessments to measure students' learning and their understanding of content standards. These important tests provide valuable information about our students' academic progress. The pages that follow contain the 2023-2024 assessment dates for local, state, and national tests. The results of high-stakes tests provide students and their parents or guardians with information on their academic readiness and level of learning, while teachers gain insight into their teaching effectiveness. These results also play a crucial role in deciding which programs, supports, and resources are necessary for students.

What Can I Do to Help My Child?

The support of parents and guardians is critical in helping children during both high-stakes and low-stakes testing. We ask parents and guardians to understand the purpose of the different tests their child takes and learn more about their academic abilities. Parents and guardians can enhance test-taking confidence through positive reinforcement and encouragement for their children. Parents can create a comfortable study environment and support their child's home learning by using test preparation resources throughout the school year. These resources are available from the school or through various test preparation websites. Parents and guardians also can create a supportive home environment that values the learner's well-being and growth while encouraging their child to maintain a balanced perspective on education and interests.

Are these the Only Tests My Child Will Take?

Use the calendar to plan appointments or school absences to ensure your child is at school to take these high-stake tests. Note that students will take other assessments and tests outside of this calendar to measure their learning needs. Information regarding other district, state, or national-mandated assessments, along with their dates, will be included in internal and external district and school communications. **State-mandated assessments are indicated by the bolded text.**

What to Do with Extending Learning Beyond the Classroom (ELBC) Days?

We ask parents, students, and staff to use the following Extending Learning Beyond the Classroom (ELBC) dates to analyze, interpret, and use the data from assessments to make informed decisions that positively affect student outcomes.

2023-2024 ELBC Days

September 1, 2023

November 3, 2023

February 16, 2024

March 15, 2024

Main Elementary (Pre-kindergarten - 5th Grade)		
Date	Assessment	Grade Band
AUGUST		
08/02/23 - 09/13/23	GKIDS Readiness Check	Kindergarten
08/02/23 - 05/13/24	Georgia Kindergarten Inventory of Skills (GKIDS 2.0)	Kindergarten
08/21/23 - 08/31/23	Amira, BOY	Grades Kindergarten - 3
08/21/23 - 09/05/23	Pre-K Literacy Screening, BOY	Pre-Kindergarten
SEPTEMBER		
09/05/23 - 09/22/23	MAP Growth, BOY	<ul style="list-style-type: none"> • Grades Kindergarten - 5: Math • Grades 2 - 5: Reading/Language Usage • Grades 3 - 5: Science
DECEMBER		
12/04/23 - 12/15/23	MAP Growth, MOY	<ul style="list-style-type: none"> • Grades Kindergarten - 5: Math • Grades 2 - 5: Reading/Language Usage • Grades 3 - 5: Science
12/04/23 - 12/08/23	Amira, MOY	Grades Kindergarten - 3
12/04/23 - 12/15/23	Pre-K Literacy Screening, MOY	Pre-Kindergarten
JANUARY		
01/10/24 - 03/01/24	ACCESS/Alternate ACCESS for ELs	Kindergarten - 5 English Learners
01/29/24 - 03/08/24	National Assessment of Educational Progress (NAEP)	Select Schools Only*
MARCH		
03/04/24 - 03/22/24	MAP Growth, EOY	<ul style="list-style-type: none"> • Grades Kindergarten - 5: Math • Grades 2 - 5: Reading/Language Usage • Grades 3 - 5: Science
03/25/24 - 05/03/24	Georgia Alternative Assessment (GAA 2.0)	Grades 3rd - 5th
APRIL		
04/15/24 - 04/19/24	Amira, EOY	Grades Kindergarten - 3
04/22/24 - 05/03/24	Pre-K Literacy Screening, EOY	Pre-Kindergarten
04/29/24 - 05/17/24	GMAS EOG Main Administration	Grades 3rd - 5th

*NAEP Schools selected:

1. Lake City Elementary
2. Mt. Zion Elementary
3. Suder Elementary

BOY – Beginning of the Year

MOY – Middle of the Year

EOY – End of Year

GMAS – Georgia Milestones Assessment System

Revised 7/24/2023

Main Middle (6th - 8th Grades)		
Date	Assessment	Grade Band
AUGUST		
08/07/23 - 08/14/23	World Languages District Assessment BOY	Grade 8, High School Core Content Spanish and French only
SEPTEMBER		
09/05/23 - 09/22/23	MAP Growth, BOY	Grades 6 - 8: <ul style="list-style-type: none"> ● Reading/Language Usage ● Math ● Science
OCTOBER		
10/23/23 - 11/06/23	Grade 8 Social Studies Benchmark #1	Social Studies
DECEMBER		
12/04/23 - 12/15/23	MAP Growth, MOY	Grades 6 - 8: <ul style="list-style-type: none"> ● Reading/Language Usage ● Math ● Science
JANUARY		
01/10/24 - 03/01/24	ACCESS/Alternate ACCESS for ELs	Grades 6 – 8 English Learners
01/29/24 - 03/08/24	National Assessment of Educational Progress (NAEP)	Select Schools Only*
FEBRUARY		
02/05/24 - 02/16/24	Grade 8 Social Studies Benchmark #2	Social Studies
MARCH		
03/04/24 - 03/22/24	MAP Growth, EOY	Grades 6 - 8: <ul style="list-style-type: none"> ● Reading/Language Usage ● Math ● Science
03/25/24 - 05/03/24	Georgia Alternative Assessment (GAA 2.0)	Grades 6 - 8
APRIL		
04/15/24 - 04/26/24	GMAS EOC Main Administration	Grade 8
04/22/24 - 05/10/24	GMAS EOG Main Administration	Grades 6 - 8
MAY		
05/03/24 - 05/10/24	World Languages District Assessment EOY	Grade 8, High School Core Content Spanish and French only

*NAEP Schools selected:

1. Eddie White Middle
2. Jonesboro Middle
3. Morrow Middle
4. Rex Mill Middle
5. Sequoyah Middle

Main High (Block Schedule) 9th - 12th Grades

Date	Assessment	Grade Band/Course
AUGUST		
08/07/23 - 08/25/23	GMAS EOC Mid-Month	Grades 9 - 12
08/07/23 - 08/14/23	World Languages District Assessment BOY	Grades 9 - 12
SEPTEMBER		
09/05/23 - 09/22/23	MAP Growth, BOY <i>(high school students enrolled in certain courses by block semester)</i>	Reading- (9th Grade Literature and Composition and American Literature and Composition) Algebra 1- (Algebra I) Life Science- (Biology)
09/25/23 - 10/06/23	U.S. History Benchmark 1 Assessment (1 st Semester)	U.S. History Students
09/05/23 - 09/15/23	GMAS EOC Mid-Month	Grades 9 - 12
OCTOBER		
10/16/23 - 10/20/23	GMAS EOC Mid-Month	Grades 9 - 12
10/25/23	PSAT	Grades 9, 10, and select 11 students
10/30/23 - 11/10/23	GMAS EOC Mid-Month	Grades 9 - 12
NOVEMBER		
11/01/23 - 11/15/23	U.S. History Benchmark 2 Assessment (1 st Semester)	U.S. History Students
11/06/23 - 11/17/23	MAP Growth, EOY <i>(high school students enrolled in certain courses by block semester)</i>	Reading- (9th Grade Literature and Composition and American Literature and Composition) Algebra 1- (Algebra I) Life Science- (Biology)
11/27/23 - 12/01/23	CTAE End-of-Pathway	CTAE Students
DECEMBER		
12/04/23 - 12/15/23	GMAS EOC Main Administration	Grades 9 - 12
12/8/23 - 12/15/23	World Languages District Assessment EOY	Grades 9 - 12
JANUARY		
1/8/24 - 1/15/24	World Languages District Assessment BOY	Grades 9 - 12
01/10/24 - 03/01/24	ACCESS/Alternate ACCESS for ELLs	Grades 9 - 12 English Learners
01/16/24 - 01/26/24	MAP Growth, BOY <i>(high school students enrolled in certain courses by block semester)</i>	Reading- (9th Grade Literature and Composition and American Literature and Composition) Algebra 1- (Algebra I) Life Science- (Biology)
01/15/24 - 01/26/24	GMAS EOC Mid-Month	Grades 9 - 12
01/22/24 - 01/31/24	CTAE ACCUPLACER	CTAE Students
01/29/24 - 03/08/24	National Assessment of Educational Progress (NAEP)	Select Schools Only*
FEBRUARY		
02/01/24 - 02/15/24	U.S. History Benchmark 1 Assessment (2 nd Semester)	U.S. History
02/05/24 - 02/16/24	GMAS EOC Mid-Month	Grades 9 - 12
MARCH		
03/04/24 - 03/15/24	GMAS EOC Mid-Month	Grades 9 - 12
03/18/24 - 3/29/24	U.S. History Benchmark 2 Assessment (2 nd Semester)	U.S. History
03/04/24 - 03/22/24	MAP Growth, EOY <i>(high school students enrolled in certain courses by block semester)</i>	Reading- (9th Grade Literature and Composition and American Literature and Composition) Algebra 1- (Algebra I) Life Science- (Biology)
03/20/24	SAT School Day	Grade 11
03/25/24 - 05/03/24	Georgia Alternative Assessment (GAA 2.0)	Grade 11
03/25/24 - 04/12/24	CTAE End-of-Pathway	CTAE Students
APRIL		
04/15/24 - 04/26/24	GMAS EOC Main Administration	Grades 9 - 12
MAY		
05/06/24 - 05/17/24	Advanced Placement (AP) Exams	AP Students
05/3/24 - 05/10/24	World Languages District Assessment EOY	Grades 9 - 12
JUNE		
06/10/24 - 07/12/24	GMAS EOC Summer Main Administration	Grades 9 - 12

*NAEP Schools selected: 1. Perry Career Academy; 2. Lovejoy High

BOY – Beginning of the Year MOY – Middle of the Year EOY – End of Year GMAS – Georgia Milestones Assessment System

Revised 7/24/2023

Main Elite Scholars and Stilwell Testing Calendar (Not on a Block Schedule)

Date	Assessment	Grade Band/Course
AUGUST		
08/07/23 - 08/25/23	GMAS EOC Mid-Month	Grades 9 - 12
08/07/23 - 08/14/23	World Languages District Assessment BOY	Grades 9 - 12
SEPTEMBER		
09/05/23 - 09/22/23	MAP Growth, BOY	Reading- (9th Grade Literature and Composition and American Literature and Composition) Algebra 1- (Algebra I) Life Science- (Biology)
09/05/23 - 09/15/23	GMAS EOC Mid-Month	Grades 9 - 12
OCTOBER		
10/09/23 - 10/20/23	GMAS EOC Mid-Month	Grades 9 - 12
10/25/23	PSAT	Grades 9, 10, and select 11 students
10/30/23 - 11/10/23	GMAS EOC Mid-Month	Grades 9 - 12
NOVEMBER		
11/27/23 - 12/01/23	CTAE End-of-Pathway	CTAE Students
JANUARY		
01/16/24 - 01/26/24	MAP Growth, MOY	Reading- (9th Grade Literature and Composition and American Literature and Composition) Algebra 1- (Algebra I) Life Science- (Biology)
01/10/24 - 03/01/24	ACCESS/Alternate ACCESS for ELs	Grades 9 - 12 English Learners
01/15/24 - 01/26/24	GMAS EOC Mid-Month	Grades 9 - 12
01/22/24 - 01/31/24	CTAE ACCUPLACER	CTAE Students
01/29/24 - 03/08/24	National Assessment of Educational Progress (NAEP)	Select Schools Only
FEBRUARY		
02/05/24 - 02/16/24	GMAS EOC Mid-Month	Grades 9 - 12
MARCH		
03/04/24 - 03/22/24	MAP Growth, EOY	Reading- (9th Grade Literature and Composition and American Literature and Composition) Algebra 1- (Algebra I) Life Science- (Biology)
03/04/24 - 03/15/24	GMAS EOC Mid-Month	Grades 9 - 12
03/20/24	SAT School Day	Grade 11
03/25/24 - 05/03/24	Georgia Alternative Assessment (GAA 2.0)	Grade 11
03/25/24 - 04/12/24	CTAE End-of-Pathway	CTAE Students
APRIL		
04/15/24 - 04/26/24	GMAS EOC Main Administration	Grades 9 - 12
MAY		
05/06/24 - 05/17/24	Advanced Placement (AP) Exams	AP Students
05/3/24 - 05/10/24	World Languages District Assessment EOY	Grades 9 - 12
JUNE		
06/10/24 - 07/12/24	GMAS EOC Summer Main Administration	Grades 9 - 12

BOY – Beginning of the Year MOY – Middle of the Year EOY – End of Year GMAS – Georgia Milestones Assessment System

2023-2024 L4GA Grant Participating Schools

Elementary Schools

Anderson Elementary School	Lake Ridge Elementary School
Callaway Elementary School	Michelle Obama STEM Elementary Academy
Edmonds Elementary School	Mount Zion Elementary School
Fountain Elementary School	Mount Zion Primary School
Haynie Elementary School	Oliver Elementary School
Huie Elementary School	

Middle Schools

Babb Middle School	Kendrick Middle School
Eddie White Middle School	Rex Mill Middle School
Forest Park Middle School	Sequoyah Middle School

High Schools

Charles R. Drew High School	Mount Zion High School
Forest Park High School	Riverdale High School
Lovejoy High School	

Elementary L4GA Schools		
Date	Assessment	Grade Band
AUGUST		
08/02/23 - 09/13/23	GKIDS Readiness Check	Kindergarten
08/02/23 - 05/13/24	Georgia Kindergarten Inventory of Skills (GKIDS 2.0)	Kindergarten
08/08/23 - 09/02/23	HMH Growth Measure, BOY	Grades 3 - 5
08/08/23 - 09/01/23	Acadience, BOY	Grade Kindergarten - 3
08/21/23 - 08/31/23	Amira, BOY	Grades Kindergarten - 3
08/14/23 - 09/01/23	Preschool Early Literacy Indicators (PELI) BOY	Pre-Kindergarten
08/14/23 - 09/01/23	Peabody Picture Vocabulary Test (PPVT) BOY	Pre-Kindergarten (Form A)
SEPTEMBER		
09/05/23 - 09/22/23	MAP Growth, BOY	<ul style="list-style-type: none"> Grades Kindergarten - 5: Math Grades 2 - 5: Reading/Language Usage Grades 3 - 5: Science
DECEMBER		
12/04/23 - 12/15/23	MAP Growth, MOY	<ul style="list-style-type: none"> Grades Kindergarten - 5: Math Grades 2 - 5: Reading/Language Usage Grades 3 - 5: Science
12/04/23 - 12/08/23	Amira, MOY	<ul style="list-style-type: none"> Grades Kindergarten - 3
JANUARY		
01/04/24 - 01/19/24	Preschool Early Literacy Indicators (PELI)	Pre-Kindergarten
01/04/24 - 01/31/24	Acadience, MOY	Grades Kindergarten - 3
01/04/24 - 01/31/24	HMH Growth Measure, MOY	Grades 3 - 5
01/10/24 - 03/01/24	ACCESS/Alternate ACCESS for ELs	Kindergarten – 5th English Learners
01/29/24 - 03/08/24	National Assessment of Educational Progress (NAEP)	Select Schools Only*
MARCH		
03/04/24 - 03/22/24	MAP Growth, EOY	<ul style="list-style-type: none"> Grades Kindergarten - 5: Math Grades 2 - 5: Reading/Language Usage Grades 3 - 5: Science
03/25/24 - 05/03/24	Georgia Alternative Assessment (GAA 2.0)	Grades 3-5
APRIL		
04/15/24 - 04/19/24	Amira, EOY	Grades Kindergarten - 3
04/15/24 - 05/17/24	HMH Growth Measure, EOY	Grades 3 - 5
04/29/24 - 05/17/24	GMAS EOG Main Administration	Grades 3 - 5
MAY		
05/01/24 - 05/17/24	Acadience, EOY	Grades Kindergarten - 3
05/01/24 - 05/17/24	Preschool Early Literacy Indicators (PELI) EOY	Pre-Kindergarten
05/01/24 - 05/17/24	Peabody Picture Vocabulary Test (PPVT) EOY	Pre-Kindergarten (Form B)

*NAEP Schools selected:

1. Lake City Elementary
2. Mt. Zion Elementary
3. Suder Elementary

Middle L4GA Schools		
Date	Assessment	Grade Band
AUGUST		
08/07/23 - 08/14/23	World Languages District Assessment BOY	Grade 8, High School Core Content Spanish and French only
08/07/23 - 09/01/23	HMH Growth Measure, BOY	Grades 6 - 8
SEPTEMBER		
09/05/23 - 09/22/23	MAP Growth, BOY	Grades 6 - 8: <ul style="list-style-type: none"> • Reading/Language Usage • Math • Science
OCTOBER		
10/23/23 - 11/06/23	Grade 8 Social Studies Benchmark #1	Grade 8
DECEMBER		
12/04/23 - 12/15/23	MAP Growth, MOY	Grades 6 - 8: <ul style="list-style-type: none"> • Reading/Language Usage • Math • Science
JANUARY		
01/04/24 - 01/31/24	HMH Growth Measure, MOY	Grades 6 - 8
01/10/24 - 03/01/24	ACCESS/Alternate ACCESS for ELs	Grades 6 – 8 English Learners
01/29/24 - 03/08/24	National Assessment of Educational Progress (NAEP)	Select Schools Only*
FEBRUARY		
02/05/24 - 02/16/24	Grade 8 Social Studies Benchmark #2	Grade 8
MARCH		
03/01/24 - 03/17/24	MAP Growth, EOY	Grades 6 - 8: <ul style="list-style-type: none"> • Reading/Language Usage • Math • Science
03/25/24 - 05/03/24	Georgia Alternative Assessment (GAA 2.0)	Grades 6 - 8
APRIL		
04/15/24 - 05/17/22	HMH Growth Measure, EOY	Grades 6 - 8
04/15/24 - 04/26/24	GMAS EOC Main Administration	Grade 8
04/22/24 - 05/10/24	GMAS EOG Main Administration	Grades 6 - 8
MAY		
05/03/24 - 05/10/24	World Languages District Assessment EOY	Grade 8, High School Core Content Spanish and French only

*NAEP Schools selected:

1. Eddie White Middle
2. Jonesboro Middle
3. Morrow Middle
4. Rex Mill Middle
5. Sequoyah Middle

High (Block Schedule) L4GA Schools		
Start Date	Assessment	Grade Band/Course
AUGUST		
08/07/23 - 08/25/23	GMAS EOC Mid-Month	Grades 9 - 12
08/08/22 - 09/02/22	HMH Growth Measure, BOY	Grades 9 - 11
08/07/23 - 08/14/23	World Languages District Assessment BOY	Grades 9 - 12
SEPTEMBER		
09/05/23 - 09/22/23	MAP Growth, BOY <i>(high school students enrolled in certain courses by block semester)</i>	Reading- (9th Grade Literature and Composition and American Literature and Composition) Algebra 1- (Algebra I) Life Science- (Biology)
09/25/23 - 10/06/23	U.S. History Benchmark 1 Assessment (1 st Semester)	U.S. History Students
09/05/23 - 09/15/23	GMAS EOC Mid-Month	Grades 9 - 12
OCTOBER		
10/16/23 - 10/20/23	GMAS EOC Mid-Month	Grades 9 - 12
10/25/23	PSAT	Grades 9, 10, and select 11 students
10/30/23 - 11/20/23	GMAS EOC Mid-Month	Grades 9 - 12
NOVEMBER		
11/01/23 - 11/15/23	U.S. History Benchmark 2 Assessment (1 st Semester)	U.S. History Students
11/13/23 - 11/30/23	MAP Growth, EOY <i>(high school students enrolled in certain courses by block semester)</i>	Reading- (9th Grade Literature and Composition and American Literature and Composition) Algebra 1- (Algebra I) Life Science- (Biology)
11/27/23 - 12/01/23	CTAE End-of-Pathway Administration	CTAE Students
DECEMBER		
12/04/23 - 12/16/22	GMAS EOC Main Administration	Grades 9 - 12
12/8/23 - 12/15/23	World Languages District Assessment EOY	Grades 9 - 12
JANUARY		
01/04/24 - 01/31/24	HMH Growth Measure, MOY	Grades 9 - 11
1/8/24 - 1/15/24	World Languages District Assessment BOY	Grades 9th - 12th
01/10/24 - 03/01/24	ACCESS for ELLs Test Administration Window	Grades 9 - 12 English Learners
01/16/24 - 01/26/24	MAP Growth, BOY <i>(high school students enrolled in certain courses by block semester)</i>	Reading- (9th Grade Literature and Composition and American Literature and Composition) Algebra 1- (Algebra I) Life Science- (Biology)
01/15/24 - 01/26/24	GMAS EOC Mid-Month	Grades 9 - 12
01/22/24 - 01/31/24	CTAE ACCUPLACER	CTAE Students
01/29/24 - 03/08/24	National Assessment of Educational Progress (NAEP)	Select Schools Only*
FEBRUARY		
02/01/24 - 02/15/24	U.S. History Benchmark 1 Assessment (2 nd Semester)	U.S. History
02/05/24 - 02/16/24	GMAS EOC Mid-Month	Grades 9 - 12
MARCH		
03/04/24 - 03/15/24	GMAS EOC Mid-Month	Grades 9 - 12
03/04/24 - 03/22/24	MAP Growth, EOY <i>(high school students enrolled in certain courses by block semester)</i>	Reading- (9th Grade Literature and Composition and American Literature and Composition) Algebra 1- (Algebra I) Life Science- (Biology)
03/18/24 - 03/29/24	U.S. History Benchmark 2 Assessment (2 nd Semester)	U.S. History
03/20/24	SAT School Day	Grade 11
03/25/24 - 05/03/24	Georgia Alternative Assessment (GAA 2.0)	Grade 11
03/25/24 - 04/12/24	CTAE End-of-Pathway	CTAE Students
APRIL		
04/15/24 - 05/17/24	HMH Growth Measure, EOY	Grades 9 - 11
04/15/24 - 04/26/24	GMAS EOC Main Administration	Grades 9 - 12
MAY		
05/01/23 - 05/12/23	Advanced Placement (AP) Exams	AP Students
05/3/24 - 05/10/24	World Languages District Assessment EOY	Grades 9 - 12
June		
06/10/24 - 07/12/24	GMAS EOC Summer Main Administration	Grades 9 - 12

*NAEP Schools selected: 1. Perry Career Academy; 2. Lovejoy High

BOY – Beginning of the Year MOY – Middle of the Year EOY – End of Year GMAS – Georgia Milestones Assessment System

All Grade Levels Ancillary Testing for Specific Initiatives or Programs		
Date	Assessment	Grade Band
08/14/23 - 09/08/23	Aimsweb Plus (BOY)	Grades Kindergarten - 12: SST Students
03/18/24 - 04/12/24	Aimsweb Plus (MOY)	Grades Kindergarten - 12: SST Students
TBD	Cambridge Assessments	Elite Scholars - Grades 9 - 12
08/22/23 - 09/23/23	EasyCBM (BOY)	Grades Kindergarten - 12: SWD
01/04/24 - 01/30/24	EasyCBM (MOY)	Grades Kindergarten - 12: SWD
04/17/24 - 05/19/24	EasyCBM (EOY)	Grades Kindergarten - 12: SWD

SST – Student Support Team

SWD – Students with Disabilities